

# Algebra I, Algebra II, Geometry, Middle School

With Mr. Grue





# Classes

**7th Grade**

Pre-Algebra

**8th Grade**

Middle School Algebra

**9 - 12**

Algebra 1

Geometry

Algebra 2

Both On-Site and Independent Study take the same classes

# Participation





# Participation

\* Worth 10% of the total grade

\* **On-site** - in class activities

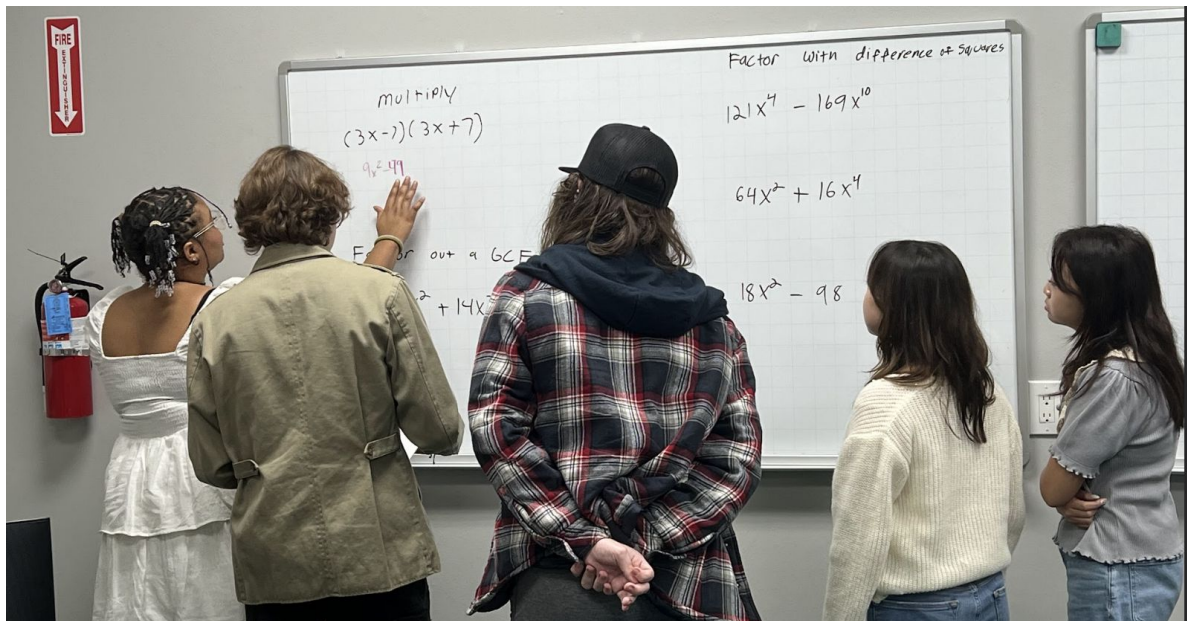
- Were you present and participated? 100%
- Were you present but did not participate? 50%
- Absent or defiant 0%

\* **Independent Study** - Quickwrites and Exit Tickets

- Did you put a good faith effort into addressing the prompt, including all parts? 100%
- Did you forget a part? 75%
- Did you put something? 50%
- Did you put “I don’t know” or not turn it in? 0%



# On-Site Warmups



# Lessons



## 5.1 Simplifying Rational Expressions

< > Algebra 1 S2 - BS - Mr. Grue / Week 2 Due MM/DD/YYYY / Week 2 Attendance - Sections 5.1, 5.3: Notes, Homework, Quizzes



Viewing as:  
David  
Grue



### Welcome David Grue / 5.1 Simplifying Rational Expressions



#### Directions for this Lesson

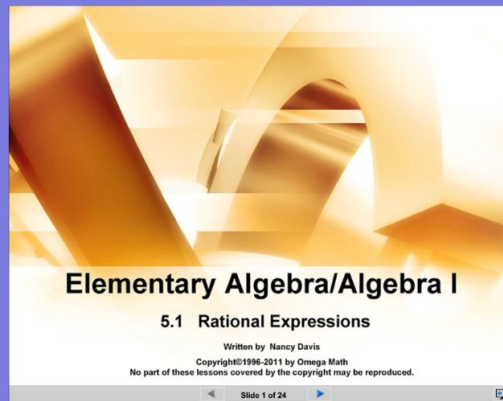
##### Review Lesson 5.1

- Read explanations
- Look through examples
- Try the interactive problems



#### Helpful Links

- [Quiz Directions](#)
- [Test Directions](#)
- [Online Calculator](#)
- [The Art of Problem Solving](#)
- [WhyU \(Videos\)](#)
- [Khan Academy \(Videos & Practice\)](#)



1



# Lessons continued

## Printable Notes

- [2.1 notes.pdf](#) (Blank)
- [2.1 Notes Key.pdf](#) (Complete)
- [2.1 cheat sheet.pdf](#)

[Shmoop video](#)



## View YouTube Instructional Videos

- [Introduction to Exponents Rules](#)
- [Product Rule of Exponents \(part 1\)](#)
- [Product Rule of Exponents \(part 2\) and Power Rule](#)
- [Quotient Rule of Exponents and the Zero Exponent Property](#)
- [Review of Exponents Rules](#)



## Homework: 2.1 #22 - 50 Even (15 Questions)

[elementary algebra 2.1.pdf](#)



Complete the quiz for this section.

[How to Take a Quiz](#)



Print

Start

Attempts: 0/2



# Homework

- Homework is worth 10% of your total grade.
- Each homework turned in will receive either a ✓ or an X based on the relevant work shown.
- The answers to all homework questions are at the bottom of the document
- All homework is due the first day of class after the associated quiz is due.
- It is BEST FOR YOU, to do the homework on the same day as the lesson while the material is fresh in your mind







# Quizzes

\*Worth 40% of the total grade

\*Do every quiz, ask for help when needed. There is no penalty for turning in quizzes or other assignments late.

\*All quizzes are due the Friday of the week they are covered in class.

\*If you do all the homework and all of the quizzes, I guarantee you will pass this class.

\*If you attempt the problems on the quiz, the lowest score you can get is 50%



# Tests

\*Worth 30% of your grade

\*You can do test corrections for problems you got wrong and get half of the possible points back.

- Example: if you got a 60% on a test and do ALL of the corrections, there are 40 available points and you will get half of them, therefore your final test score will be an 80%

\*Study tip - look to the homework for example problems to do in order to study for tests

## Breakdown of Grades

<b>Content Area</b>	<b>Value</b>
Quizzes	40%
Tests	30%
Participation (warm ups, quickwrites, exit tickets, attendance)	10%
Homework	10%
Final (waived if overall grade $\geq 90\%$ )	10%
<b>Total</b>	<b>100%</b>

## Breakdown of Grades - Example

<b>Content Area</b>	<b>Value</b>	<b>Example Grades</b>	<b>Overall grade impact</b>
Quizzes	40%	75% C	30%
Tests	30%	60% D	18%
Participation (warm ups, quickwrites, exit tickets, attendance)	10%	10% A	10%
Homework	10%	80% B	8%
Final (waived if overall grade $\geq$ 90%)	10%	50% F	5%
<b>Total</b>	100%		71% C

## How test problems are graded

Score	Method	Steps	Previous Skills	Answer
5/5	✓	✓	✓	✓
4/5	✓	✓	✓	x
3/5	✓	✓	x	x
2/5	✓	x	x	x
1/5	x	x	x	x
0/5	Left blank or unrelated answer			



# Buzz Demonstration



# What questions do you have?

Feel free to email me at any time, I strive to always respond within 24 hours, [mrgrue@ivytechcs.org](mailto:mrgrue@ivytechcs.org)

My office hours are Monday/Friday 10:30 AM - 12:30 PM I am available here on-site or through Zoom.

My Zoom Classroom is 856 685 5054  
The password is 010715